



# BELLE RÊVE

BY ZIMAYA



# BELLE RÊVE

BY ZIMAYA



# BEAUTIFUL DREAMS RESIDE HERE

Belle Rêve, a 5-floor heaven of affordable luxury where reality and fantasy intertwine seamlessly. These premium apartments located in Jumeirah Village Circle, Dubai offer a lifestyle that is indulgent yet realistic. With high terrace, outdoor living spaces and lavish amenities, Belle Rêve makes a comfortable modern home that is a dream come true.



# JUMEIRAH VILLAGE CIRCLE

*with a lush  
green heart*

At the centre of JVC is a wealth of green sanctuaries; 40 man-made parks offering the residents an enchanting escape into nature. Conveniently located with easy access to major roads such as Al Khail Road and Hessa Street, exploring Dubai for business or pleasure is effortless from here. The abundance of retail stores and dining options ranging from restaurants to bars and cafes at the Circle Mall within JVC has made it a highly coveted residential address in Dubai.



# A DREAM WITHIN A DREAM

*Belle Rêve, an overview*

Amongst the green-dappled Jumeirah Village Circle, where sunlight spools onto leaves like puddles of water, stands Belle Rêve – a serene sanctuary within a sanctuary. Belle Rêve offers all the conveniences and luxuries of modern living, along with the peacefulness reminiscent of sleeping on an early summer day.







*Let warm contentment  
take over*



Soak in the beauty of nature,  
one step at a time.



# WHERE GENTLE ELEGANCE GREET'S YOU

## *The Lobby*

Soft suffused ethereal light filtering through the glass facade of this spacious open lobby, with high ceiling feels like a tender loving embrace that welcomes you to Belle Rêve. The warmth of this space coloured in soothing pastel hues and adorned with plush rugs and furnishings makes a cozy first impression on all who enter Belle Rêve. It sets the stage for the overall experience that awaits you here.







## A DREAMY REALM OF YOUR OWN *The living area*

Every home in Belle Rêve features a spacious living room with delicate, double-glazed glass windows and balcony doors that offer impact protection and sound resistance. The layout of the room ensures unobstructed panoramic views.

Private balconies warmly invite you to bask in the beauty of the surroundings. The high ceiling makes each space open and luxurious, inviting you to dream and create. Additionally, a select few apartments include private pools, adding an extra touch of enchantment to this magical space.





*Live the colours of  
your mind*





# WARMTH AND LIGHT THAT INDUCE DREAMS

*Cozy sleep spaces*

Luxuriate in dreamy bedrooms enhanced with smart home systems and exquisitely finished high-end interiors. Each bedroom is a sanctuary, carefully crafted to blend comfort with sophistication. Designer finishes elevate the space, ensuring a stylish ambience that also promotes relaxation and tranquility.





## Kitchen

Where culinary dreams come to life



## Bathroom

Meticulously crafted elegant fitting and fixtures







BELLE RÉVE  
BY ZIMAYA



# CHERISH THIS WORLD OF CARE. LUXURIOUS AMENITIES.

Each facility at Belle Rêve is designed to provide comfort while nurturing and respecting the surroundings. Modern conveniences and environmental mindfulness intertwine here while creating a sanctuary of serenity amidst the bustling energy of urban life.

## TWICE THE AMENITIES. DOUBLE THE COMFORT.



Adults' pool



Children's pool



Sunken garden



Water fountains



Pool Deck lounge



Cabanas



Gym



Club house



Co-working spaces



Walking track



Roof lounge



Outdoor cinema



Yoga



Barbeque and party area



Multi-purpose court



Double height guest lobby



EV chargers



Kids' play area



Pickleball court



Organic greenhouse



Home automation



Table tennis court



Semi-basketball court





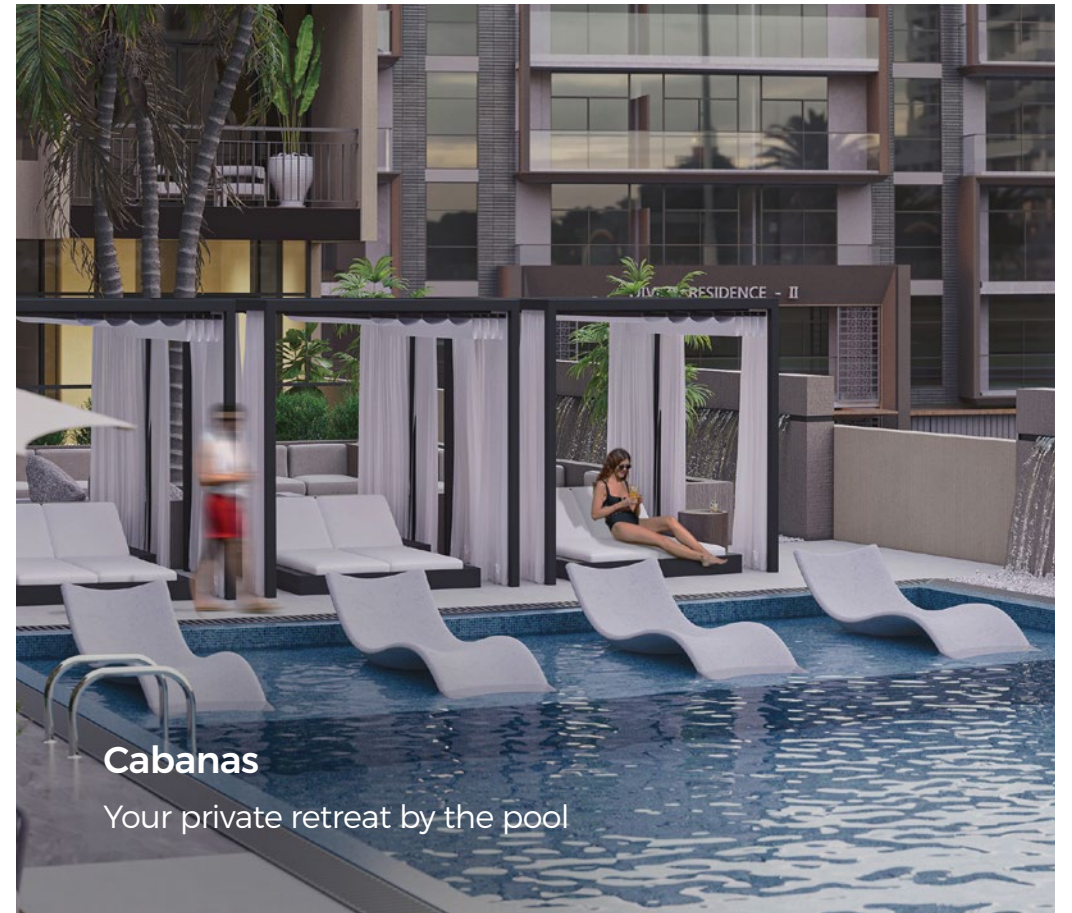
### Swimming pool

Spend lazy afternoons at the deck lounge of our semi-olympic sized pool.



### Kids' pool area

Let your little ones make a splash in our kids' pool area



### Cabanas

Your private retreat by the pool





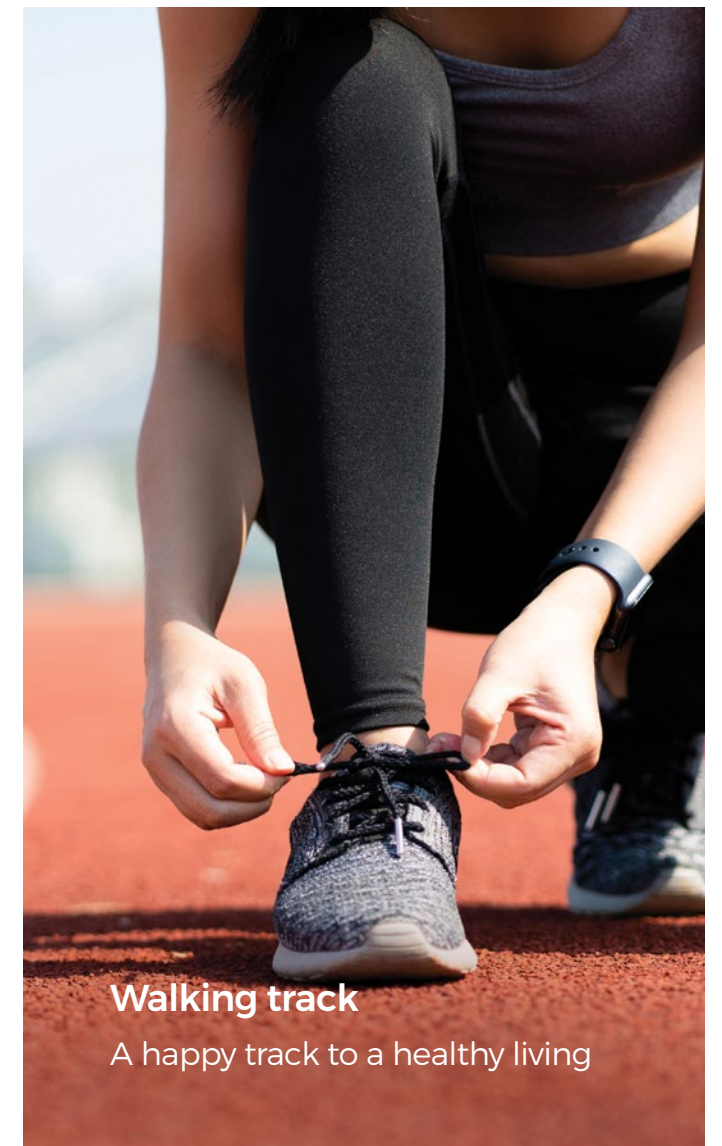
### Sunken garden

The sunken garden is a spacious gathering area adjacent to the pool, offering views of both the fountain and the pool.



### Basketball court

Elevate your game at our basketball court on the rooftop level



### Walking track

A happy track to a healthy living



### Organic greenhouse

Experience the essence of organic farming

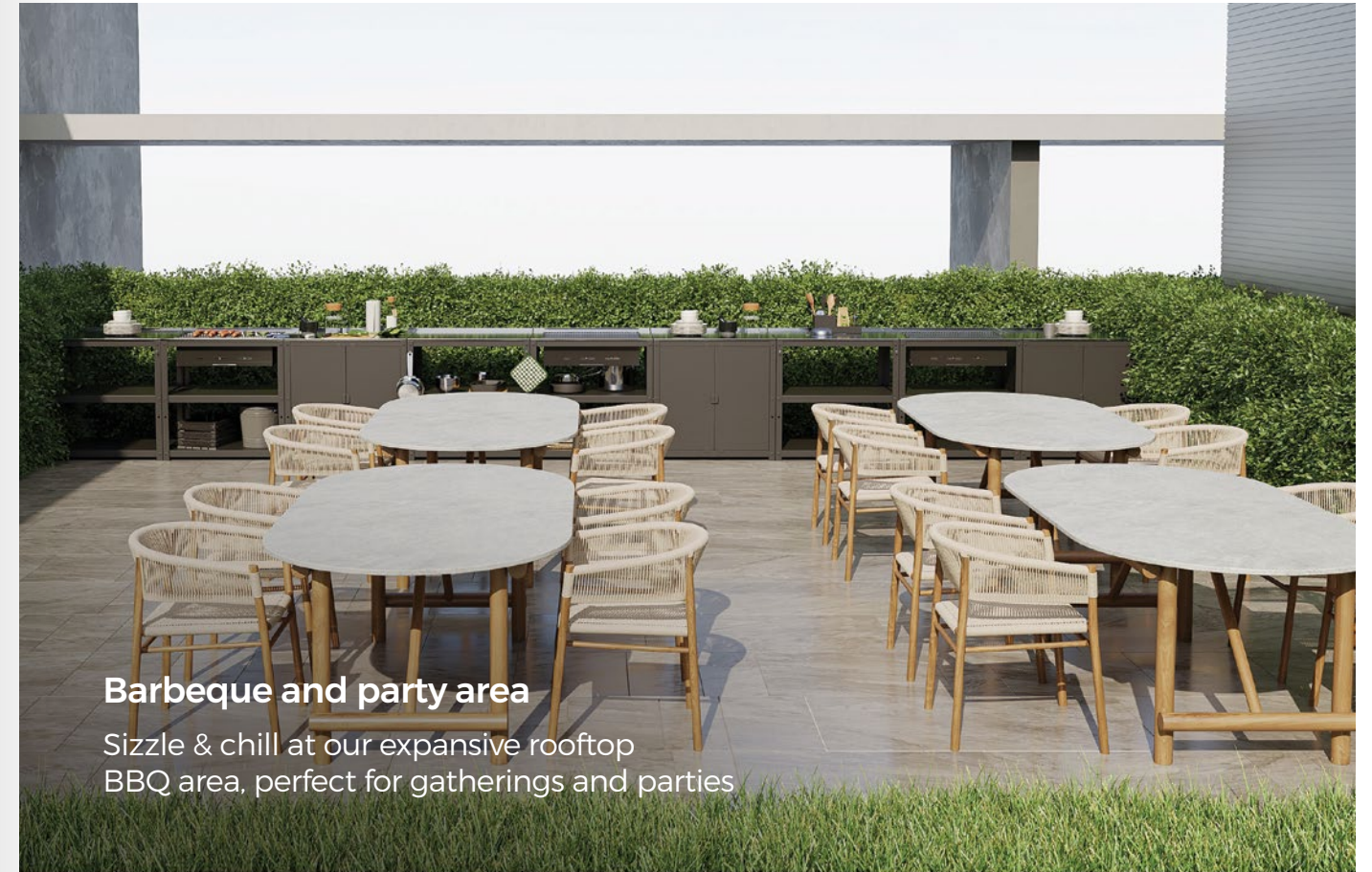


**Kids' play area**  
Playtime paradise

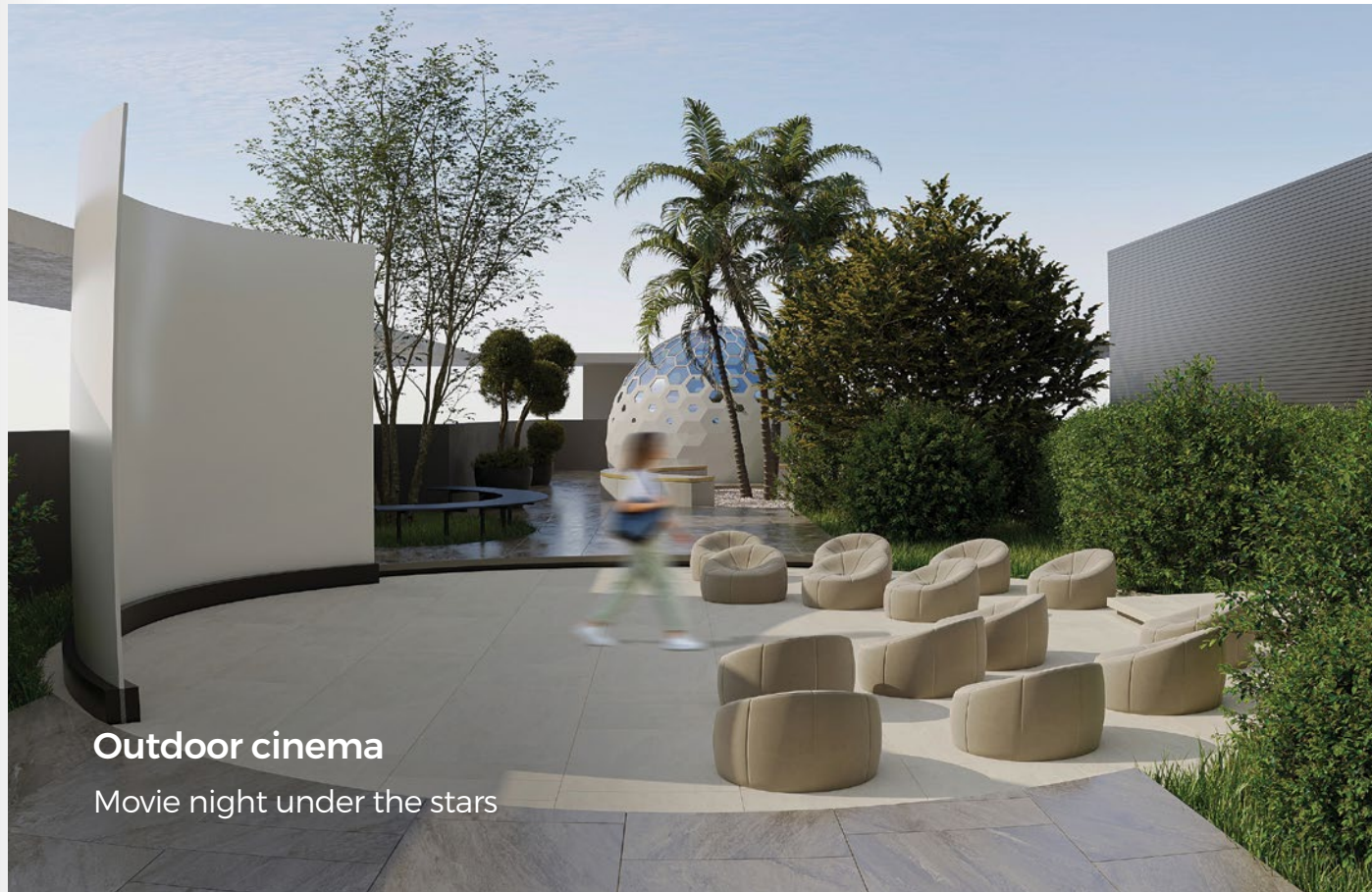


**Barbeque and party area**

Sizzle & chill at our expansive rooftop BBQ area, perfect for gatherings and parties



**Outdoor cinema**  
Movie night under the stars



**Rooftop lounge**

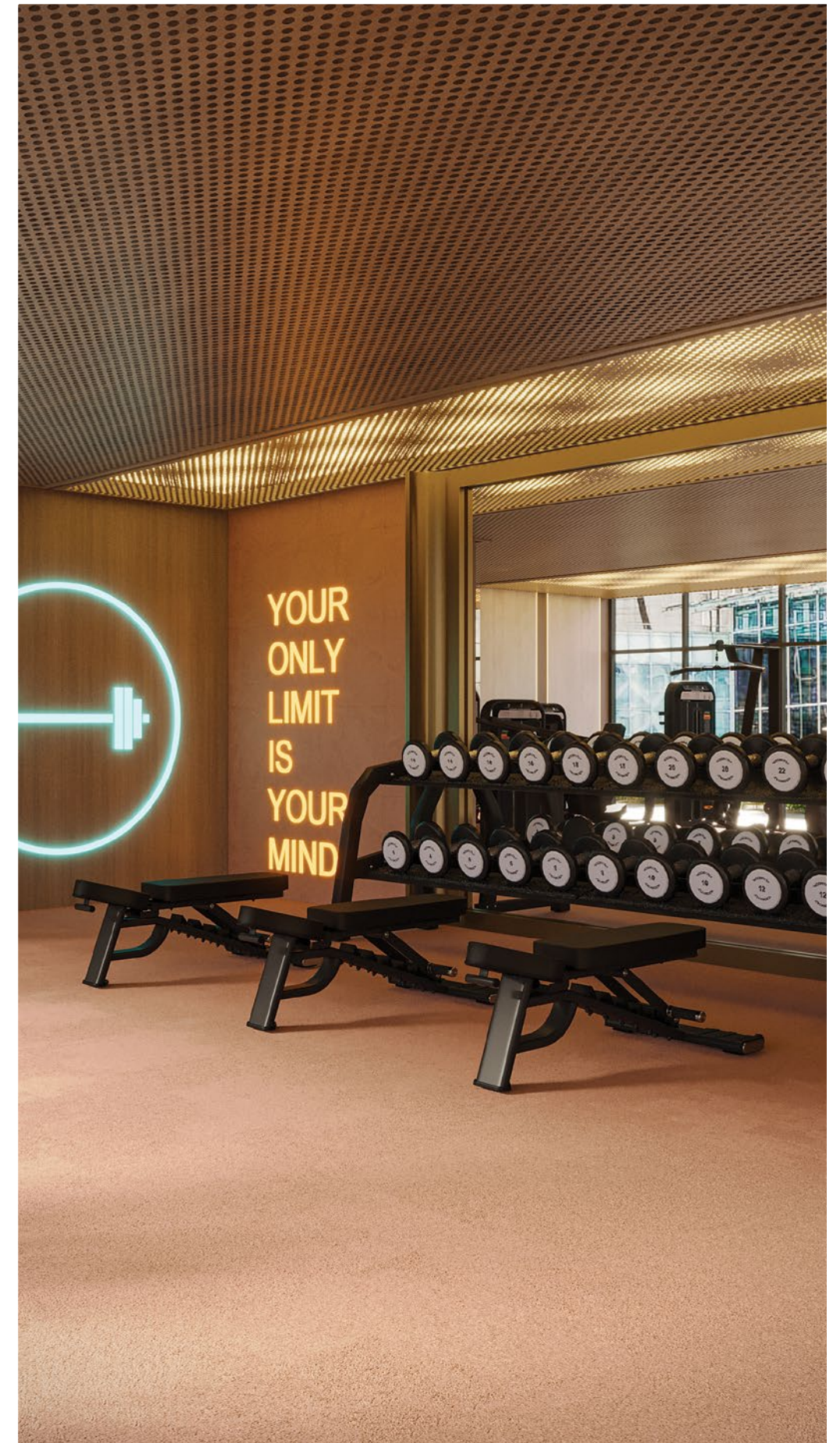
Soak up the sun and socialize with friends in our bright and airy circular rooftop lounge





## Gymnasium

Workout with high-end equipment, and a pool-view







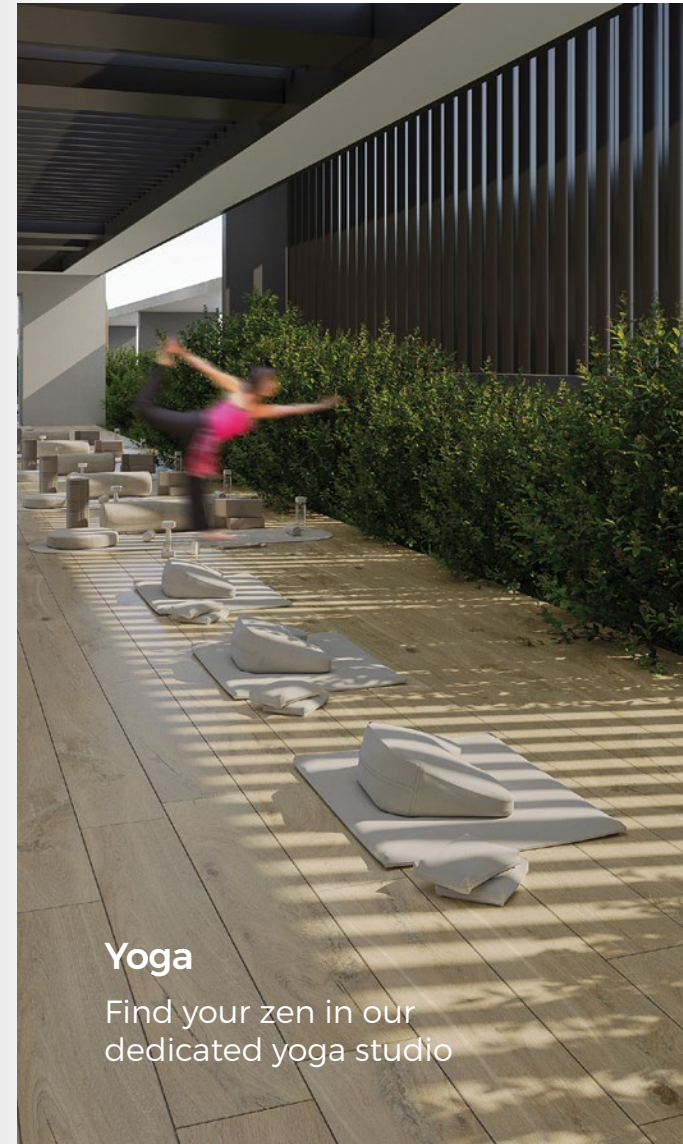
### Table tennis court

Ace your game with our state-of-the-art table tennis court



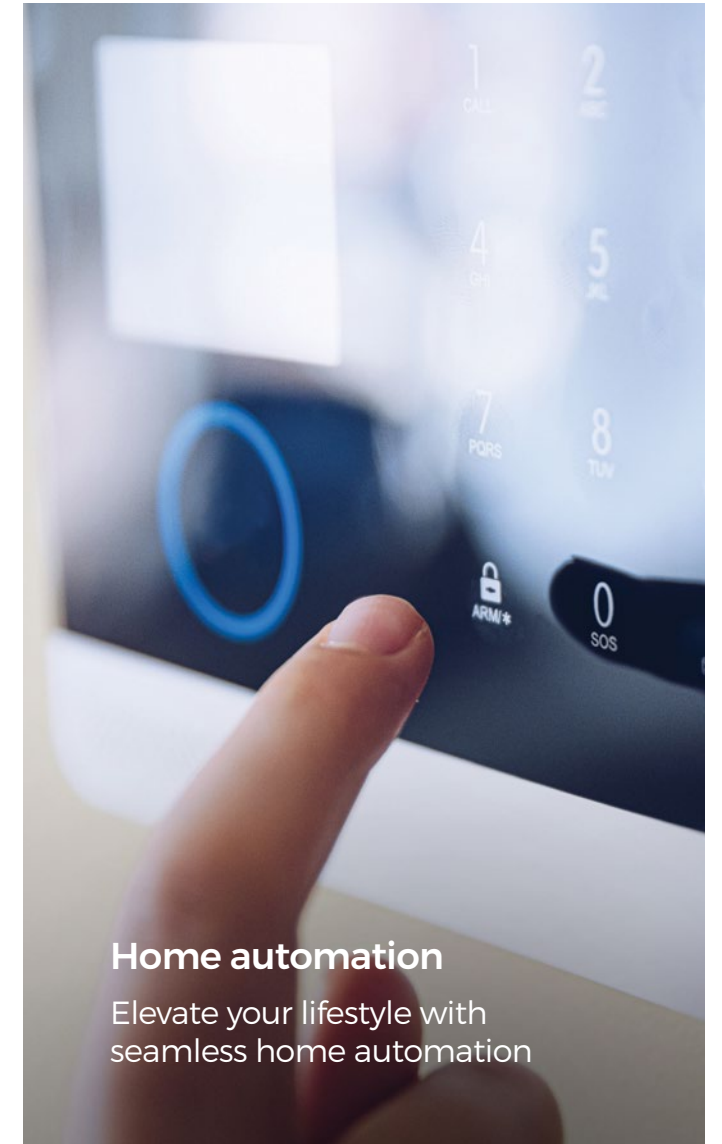
### Pickleball court

Serve up fun and fitness on our premier pickleball court



### Yoga

Find your zen in our dedicated yoga studio



### Home automation

Elevate your lifestyle with seamless home automation



### EV chargers

Charge easily with convenient EV charging stations





**Clubhouse**

Where the community comes to life

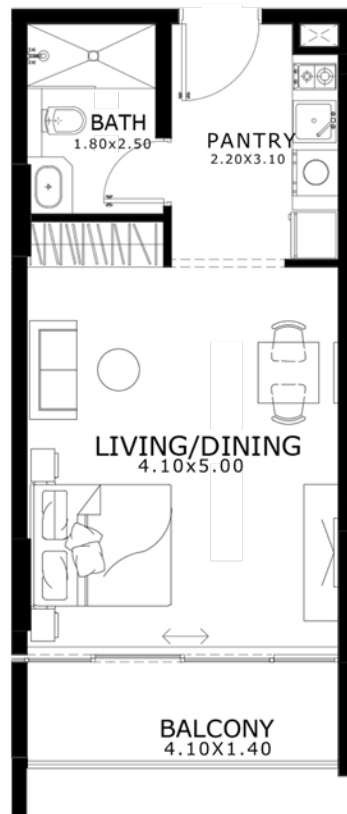




TYPICAL LAYOUTS

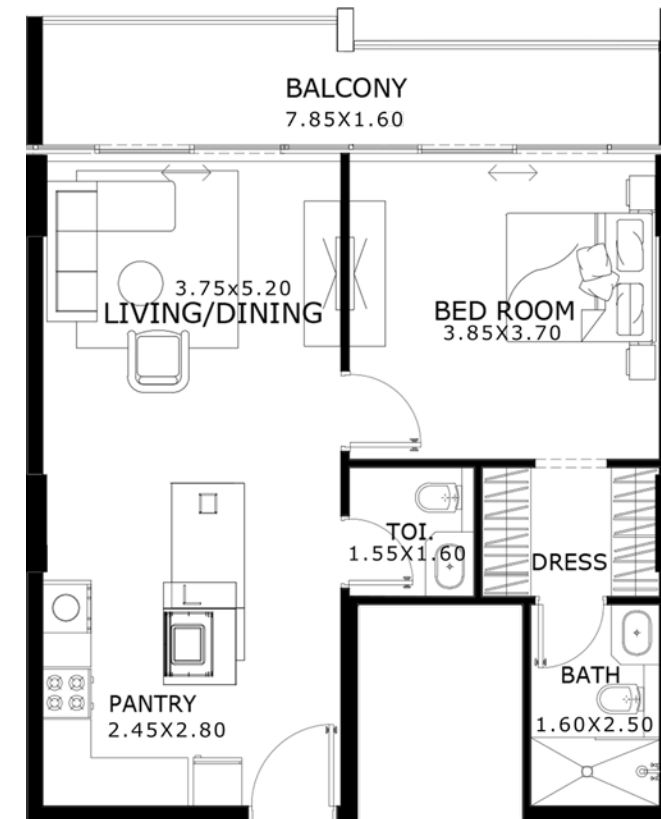
# STUDIO

Area details	Minimum area	Maximum area
Suite area	343.58 Sq. Ft.	392.34 Sq. Ft.
Balcony area	53.07 Sq. Ft.	147.90 Sq. Ft.
Total area	396.65 Sq. Ft.	540.24 Sq. Ft.



# 1 BEDROOM

Area details	Minimum area	Maximum area
Suite area	628.18 Sq. Ft.	637.65 Sq. Ft.
Balcony area	106.78 Sq. Ft.	217.00 Sq. Ft.
Total area	734.96 Sq. Ft.	854.65 Sq. Ft.

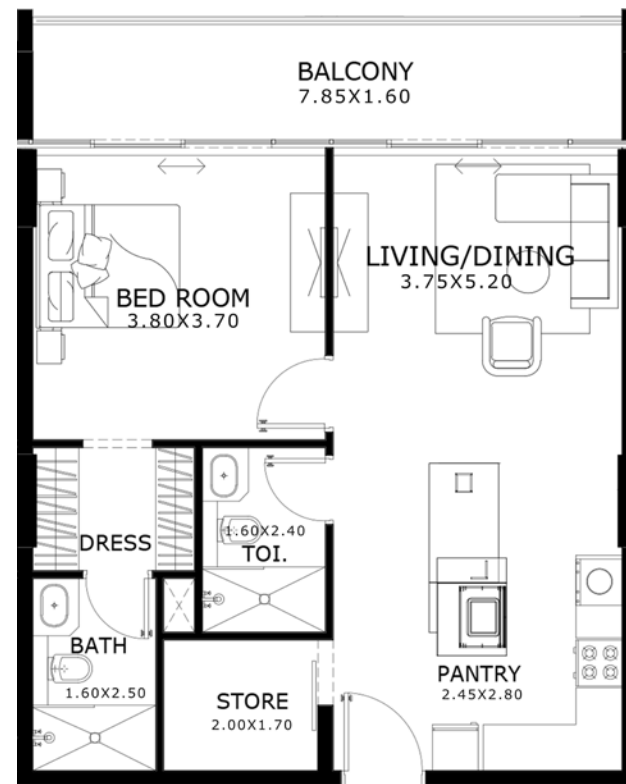




TYPICAL LAYOUTS

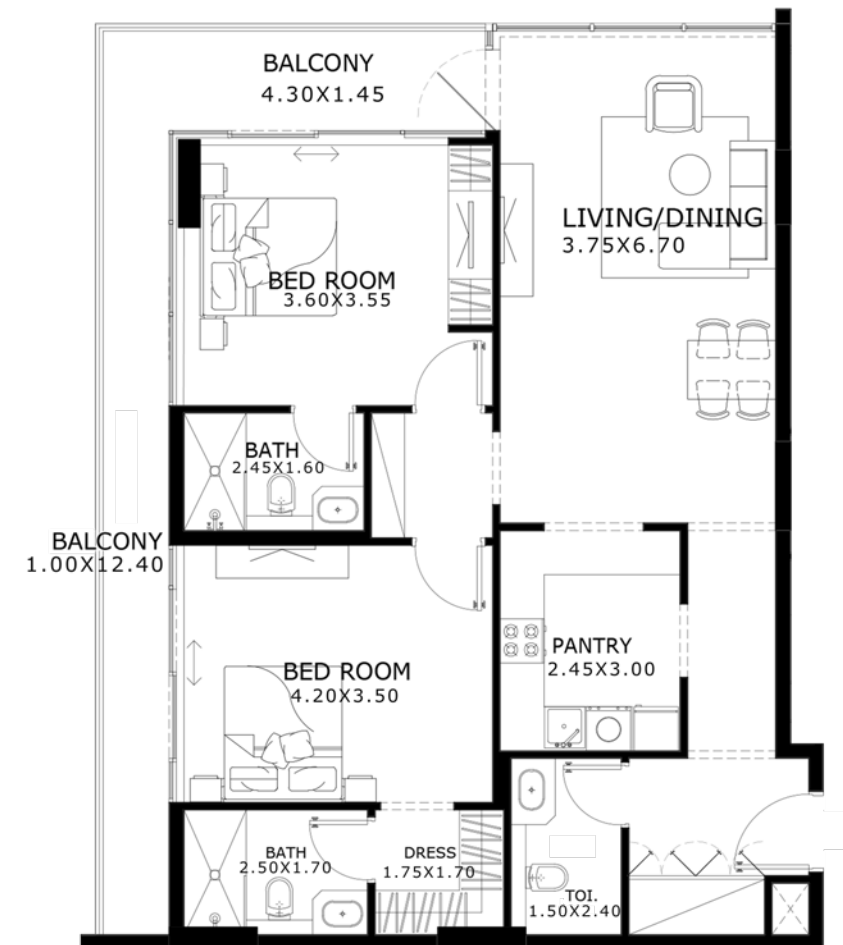
# 1 BEDROOM with store

Area details	Minimum area	Maximum area
Suite area	691.90 Sq. Ft.	703.42 Sq. Ft.
Balcony area	106.89 Sq. Ft.	217.22 Sq. Ft.
Total area	798.79 Sq. Ft.	920.64 Sq. Ft.



# 2 BEDROOM

Area details	Minimum area	Maximum area
Suite area	1,051.20 Sq. Ft.	1,054.54 Sq. Ft.
Balcony area	196.55 Sq. Ft.	451.55 Sq. Ft.
Total area	1,247.75 Sq. Ft.	1,506.09 Sq. Ft.

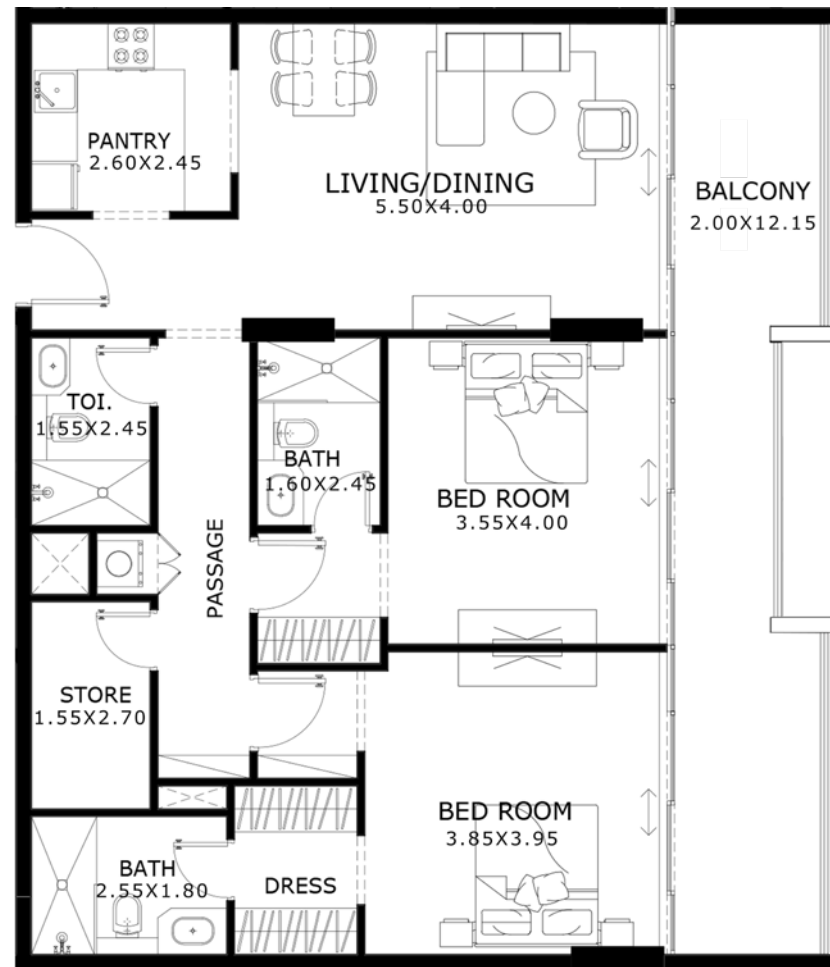




TYPICAL LAYOUTS

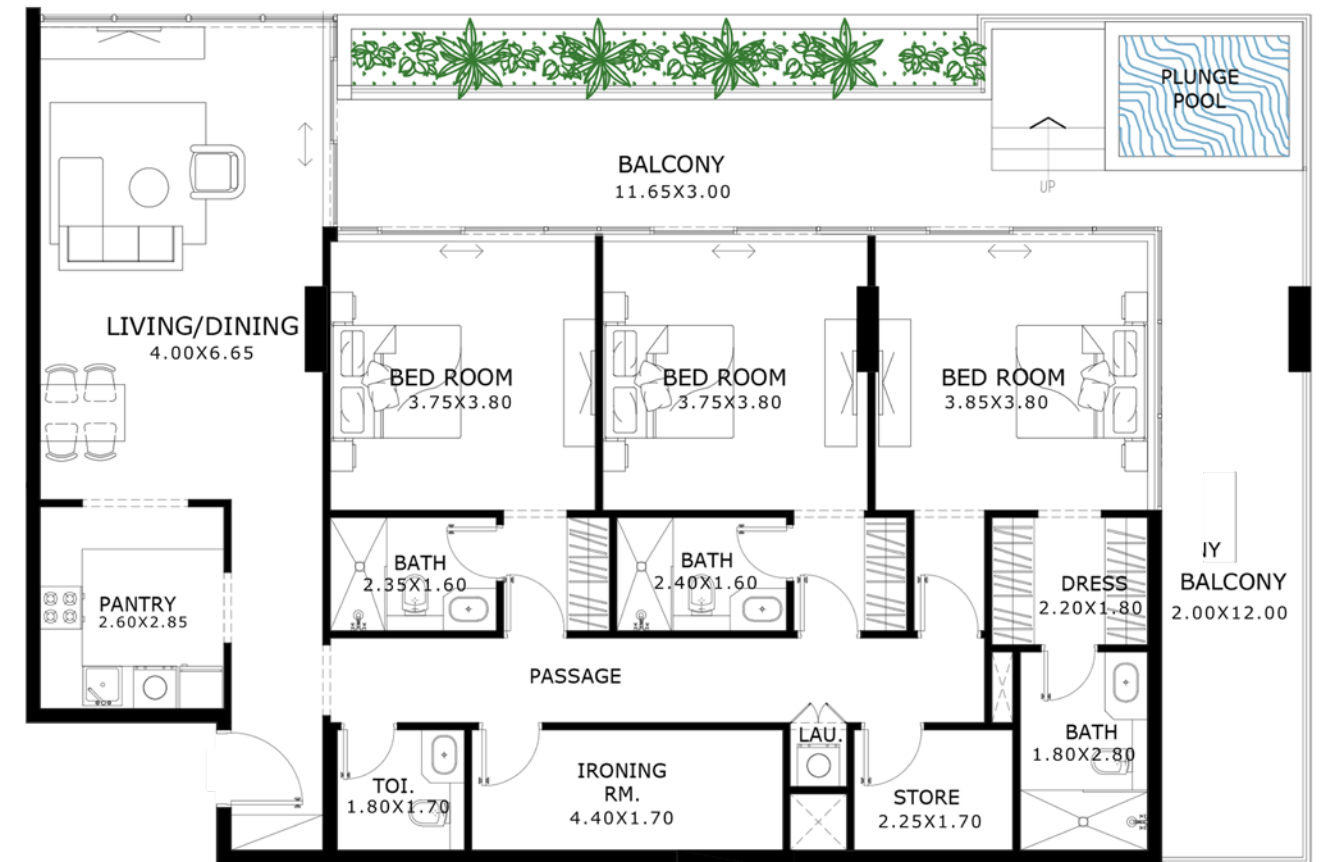
# 2 BEDROOM with store

Area details	Minimum area	Maximum area
Suite area	1,035.81 Sq. Ft.	1,110.30 Sq. Ft.
Balcony area	173.08 Sq. Ft.	401.39 Sq. Ft.
Total area	1,208.89 Sq. Ft.	1,511.69 Sq. Ft.



# 3 BEDROOM with maid room & store

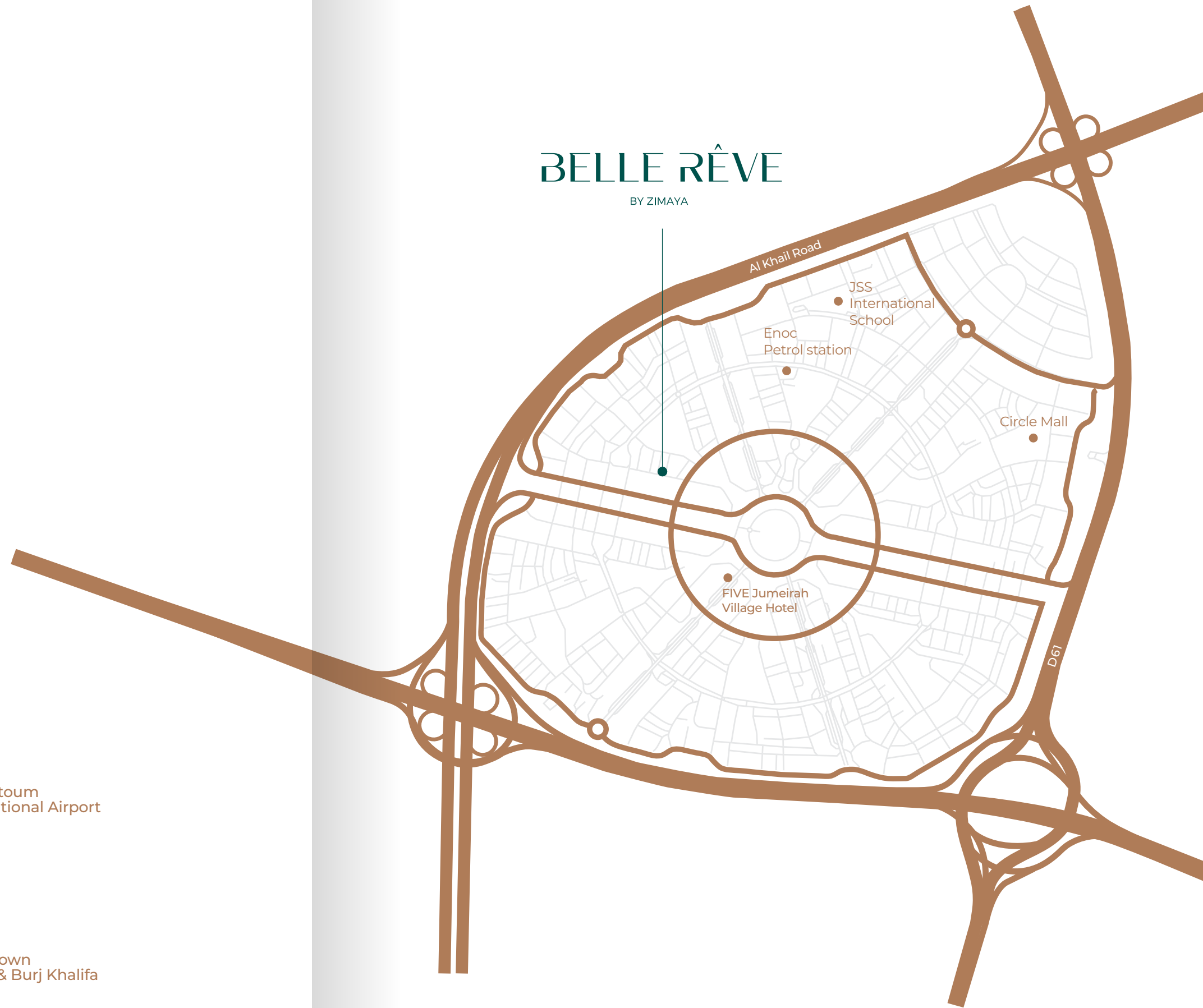
Area details	Minimum area	Maximum area
Suite area	1,577.45 Sq. Ft.	1,578.20 Sq. Ft.
Balcony area	635.61 Sq. Ft.	636.69 Sq. Ft.
Total area	2,213.06 Sq. Ft.	2,214.89 Sq. Ft.





# LOCATION MAP

-  **20** Jumeirah  
Min Beach
-  **30** Dubai  
Min International Airport
-  **10** Dubai  
Min Marina
-  **12** Ain  
Min Dubai
-  **25** Al Maktoum  
Min International Airport
-  **15** Burj  
Min Al Arab
-  **20** Museum  
Min of the Future
-  **18** Palm  
Min Jumeirah
-  **10** Mall of the  
Min Emirates
-  **15** Downtown  
Min Dubai & Burj Khalifa





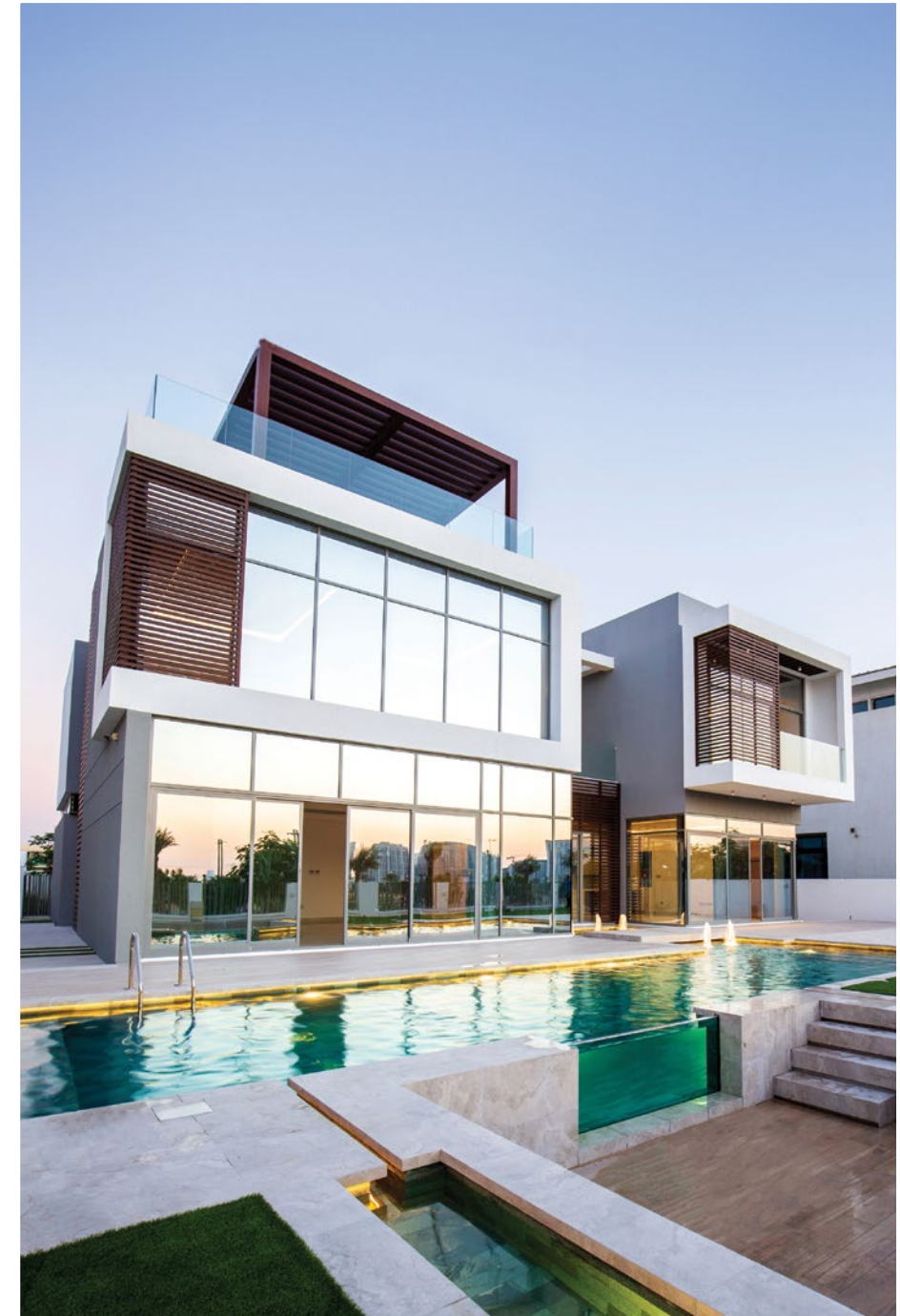
# ABOUT ZIMAYA

Zimaya Properties is a leading firm in the upscale real estate sector of the Middle East, providing luxurious residential, commercial, and recreational properties across the UAE. Our mission is to create living environments that enrich lives and bring daily fulfilment, empowering individuals as they pursue their dreams and ambitions.

Zimaya Properties brings together seasoned industry professionals boasting over three decades of construction and development expertise across the UAE and India. Zimaya's townhouse communities in Dubai have garnered widespread acclaim for its unparalleled quality, meticulous attention to detail, and exceptional layouts, commanding impressive gains for investors upon completion.

With Belle Rêve, Zimaya Properties aims to surpass previous achievements by elevating project standards to new heights. Set in Jumeirah Village Circle, Belle Rêve promises to stand out as one of the premier developments, offering top-tier quality at accessible prices. Alongside, it assures an array of upscale amenities tailored for residents' leisure, all while ensuring lucrative returns for its investors.

## Recent projects by the group



**Custom Luxury Villa**  
Dubai Hills Estate





**Afzal Enclave**  
Vadodara, India



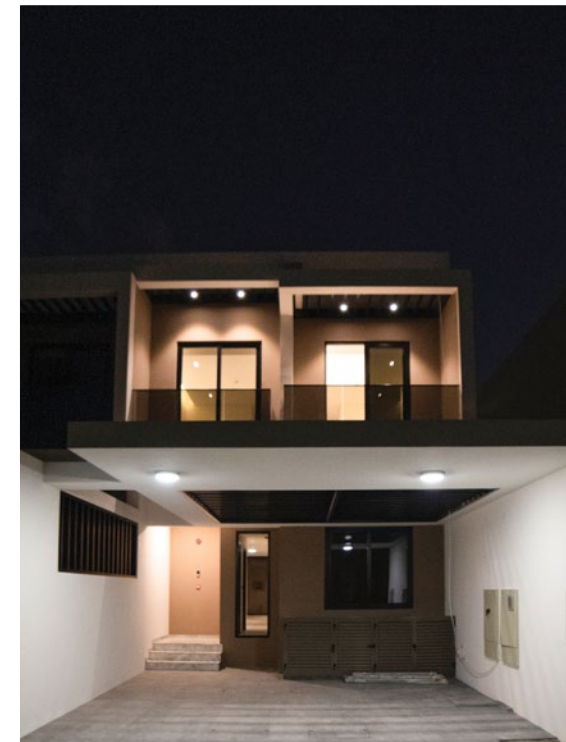
**Burhani Plaza**  
Vadodara, India



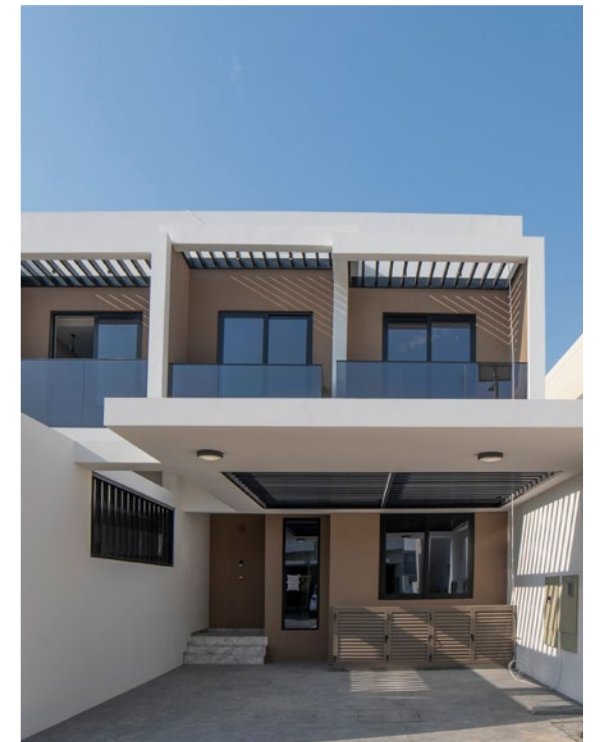
**Zimaya Signature Villas**  
Al Furjan, Dubai



**Al Aswad Villa Community**  
Vadodara, India



**Zimaya Elegance**  
Al Furjan, Dubai






**Zimaya Prestige Villas**  
Al Furjan, Dubai





Office #107, Building #6, Bay Square,  
Business Bay, Dubai, UAE.

    zimayaproperties

---

Disclaimer: All images used are for illustrative purposes only and do not represent the actual size, features, specifications, fittings, and furnishings. the developer reserves the right to make revisions/alterations at it's absolute discretion, without any liability whatsoever.







# BELLE RÊVE

BY ZIMAYA